



ADJUSTED FIT

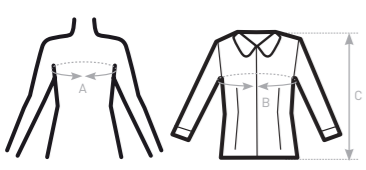
- Cotton rich polycotton Oxford fabric with **Easy Care** finish
- Soft feminine collar
- Cross stitched mother-of-pearl effect buttons (except Oxford Blue: mother-of-pearl effect white buttons)
- 2-button adjustable cuffs
 - a. Rounded cuffs
 - b. Additional cufflink buttonholes
- Darts at bustline & back panel for a feminine shape
- Horizontal last buttonhole
- Curved bottom hem



- 70% **combed** cotton - 30% polyester
- Oxford
- 135 g/m² = **EASY CARE**
- XS > 6XL
- 1 pc/pack & 10 pcs/carton



DUO
CONCEPT
with B&C Oxford LSL /men



SIZES [CM]

B&C OXFORD LSL /W. SW 003		US	XS	S	M	L	XL	XXL	XXXL	4XL	5XL	6XL
A DRESS SIZE	FR	36	38	40	42	44	46	48	50	52	54	54
	IT	40	42	44	46	48	50	52	54	56	58	58
	EU	34	36	38	40	42	44	46	48	50	52	52
	UK	8	10	12	14	16	18	20	22	24	26	26
B CHEST SIZE	CM	91	96	101	106	111	116	121	126	131	136	
C CENTER BACK LENGTH	CM	65	66	67	68	69	70	71	72	73	74	



WOMEN'S LONG SLEEVED EASY CARE OXFORD SHIRT

